

# PRE-BUILD SOMETHING INCREDIBLE!

NOW ITS NOT NECESSARY TO BUILD EVERYTHING ON-SITE

## WE DON'T SUPPLY BUILDINGS WE DELIVER PROJECTS

Today, lakhs of metric tonnes on, and with countless customers served, we are still at the forefront of this movement. From stand alone warehouses, to complex architectural high rises and road over bridges our pre engineered structures dot the landscape of this nation, and stand testament to our

Deltin Structures offers complete turnkey solutions from conceptualization to. designing, manufacturing and erection of Pre Engineered Metal Buildings, Portable Buildings and components like Roofing, Wall Cladding, Floor Decking, Sandwich panels etc. with the help of experienced and expert workforce.

## Contact us

**Address: Plot No. 26, Sector- 10/A,  
GIDC, Gandhidham- 370201**  
**9979570333,info@deltinstructures.com**



**PIONEERS OF PRE-ENGINEERED METAL BUILDING SYSTEMS**





# SUPREME SATISFACTION

## SETTING NEW BENCHMARKS...

We have made our presence felt in the Steel Roofing industry for many years now. Our first generation in 2016 established this Business, since then our projects have enabled us to evolve through every stage.

Over this long period, we have grown with the support of almighty god have expanded our business covering the region of central India with our wide array of steel products. We are present in Indore, Mumbai and Delhi with our offices.

Adding value to our customer's products is part of a longstanding tradition of innovation at Supreme PEB. We offer a truly global production capacity with state-of-the-art manufacturing unit backed by the motivated team of engineers and trained professionals,

Supreme's unparalleled combination of leadership in technology, excellence

in customer service and flexibility in operation have enabled it to transcend

beyond customer satisfaction.

## VISION

Utilizing Years of industry experience and functional expertise, We envision beyond standard solutions to develop new insights and drive tangible results through a combination of innovation, business know-how and cost effectiveness.

## MISSION

To provide next generation metal building and its components to Indian industry which are sustainable, energy efficient, cost effective and always pursuing high quality and service credibility with a great respect towards the natural and social environment.

## OUR FOCUS

### HIGHEST CUSTOMER SATISFACTION

#### ▶ CUSTOMER CENTRICITY

Customers & their requirements are placed at the core of all planning and operations

#### ▶ EMPLOYEE EMPOWERMENT

Continue effort to train & upgrade our human resource thereby leading to organization development.

#### ▶ OPERATIONAL EXCELLENCE

Real-time & Expert planning to attain common objective.

#### ▶ TRANSPARENCY IN TRANSACTIONS

Factual reporting, as well as continuous monitoring of the work in progress.





## CENTRAL INDIA'S BIGGEST & MOST ADVANCED MANUFACTURING FACILITY

With over 135,000 sq. Ft. of avant-garde manufacturing premises at Sanwer Road, Indore.

Our manufacturing facility as one of the leading player in the rapidly growing composite industry which caters to the requirement of segments such as Infrastructure, Chemical, Electrical, Railway, Automobile, Defence, Wind Energy, Offshore, Marine and Building & Construction.

Over a sustainable presence of four decades the success and reputation of Supreme which started as a dream of a man is now extended to the dream of many.

The facilities have the capacity to manufacture-



▶ Pre-Engineered Steel Buildings (PEBs)



▶ Hot Rolled Steel Structures



▶ Corrugated Roofing Sheets  
Z & C Purlin & Deck Sheets



▶ Building Accessories  
& supply



# PRE-ENGINEERED BUILDING (PEB)

PEB is a steel structure built over a structural concept of primary members, secondary members and the cover sheeting connected to each other.

The Structural members are custom designed to be lighter in weight and high in strength. It can be fitted with different structural additions like trusses, Mezzanine floors, Facia, canopies and crane systems as per user requirements.



## SMART PREFABS FOR SMART P&I

Pre Engineered Buildings are custom made to suit a wide range of applications in different industry sectors. These metal buildings are different from conventional buildings in ways like speed in delivery and erection, flexibility in expansion and withstand severe weather conditions.

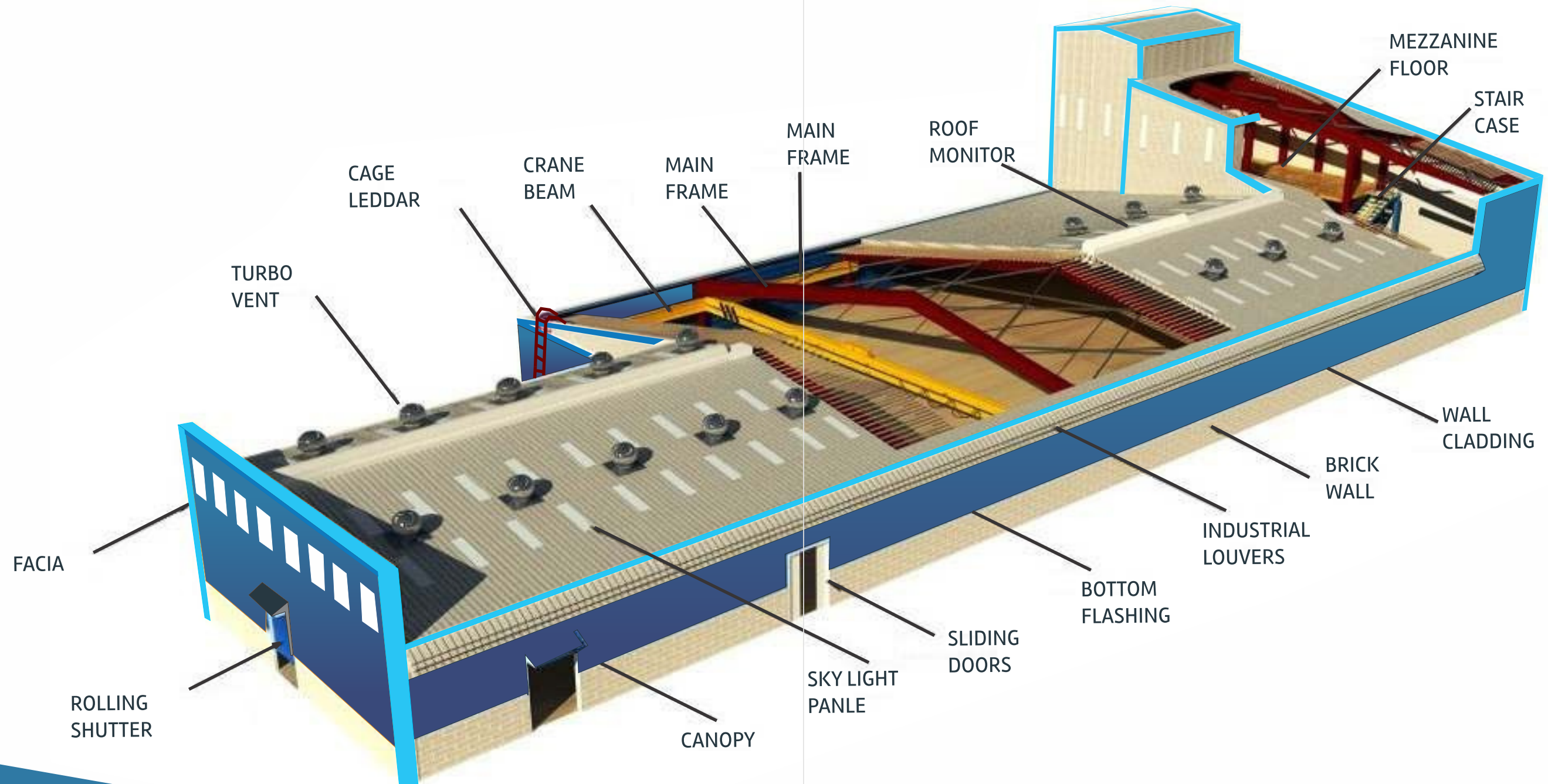
We are a one stop solution provider for all your structural needs and have products ranging from Porta cabins, Canopies, Mezzanine Floors, Stairs, etc.

Having an experience of over three decades in this industry.

## ADVANTAGES OF PEB

- ▶ **REDUCE CONSTRUCTION TIME**  
Due to the systematic approach, the use of high strength steel, use of built-up sections which are optimized by the computer aided programs and the use of continuous light weight secondary steel section, there is an overall reduction in steel weight, cost and time relative to conventional steel construction.
- ▶ **DESIGN**  
Since pre-engineered steel buildings (PEBs) are mainly formed of standard sections and connections, the design time is significantly reduced, Specialized computer analysis with custom details, The light weight flexible frames offer higher resistance to seismic forces.
- ▶ **FOUNDATIONS**  
Pre-engineered steel buildings are about 50% lighter than the conventional steel structures, hence, the foundations are of simple design, easy to construct and lighter.
- ▶ **ERECTION**  
All components are standard like the LEGO. The erection time is faster.
- ▶ **FLEXIBILITY OF EXPANSION**  
Buildings can be easily expanded in length by adding more bays, also, expansion in width and height is possible by pre-designing for future expansion.
- ▶ **LARGE CLEAR SPANS**  
Buildings can be supplied to around 90m clear spans.
- ▶ **ENERGY EFFICIENT ROOF AND WALL SYSTEMS**  
Buildings can be supplied with polyurethane insulated panels or fibreglass blanket insulation to achieve required "U" values.
- ▶ **LOWER COST**  
Due to the systems approach, there is a significant saving in design, manufacturing and site erection cost, the structural elements are shaped to follow the stress diagram of the member, thus reducing weight, cost and load to foundations, the secondary members and cladding nest together reducing transportation cost, the overall price per square metre may be reduced as much as 30% lower than conventional steel.





## STRUCTURAL SYSTEM

Structural system are the main load carrying and support members of a Pre-Engineered building. The Shape and size vary based on application and requirements. The main frame members are the load carrying member of a structural system which include Columns, Endwall posts, Rafters and other main support members.

All Structural Steel sections and welded plate members shall be designed in accordance with the applicable sections, relating to design requirements and allowable stresses of the latest edition of the AISC (**American Institute of Steel Construction**) specification for the Design, Fabrication and Erection of the Structural Steel for Buildings.



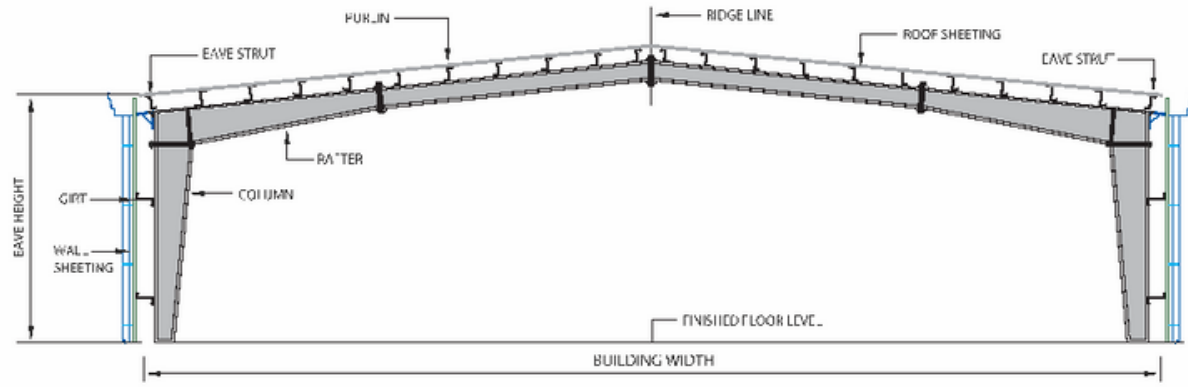
**PEB STRUCTURE MEMBERS**

- ▶ ANCHOR BOLTS
- ▶ MAIN FRAME COLUMNS
- ▶ MAIN FRAME RAFTERS
- ▶ END WALL RAFTERS
- ▶ END WALL
- ▶ WIND COLUMNS
- ▶ ROOF PURLINS
- ▶ SIDE GIRTS
- ▶ EAVE STRUT
- ▶ CANOPY
- ▶ SKY LIGHTS
- ▶ SAG RODS
- ▶ BRACING RODS

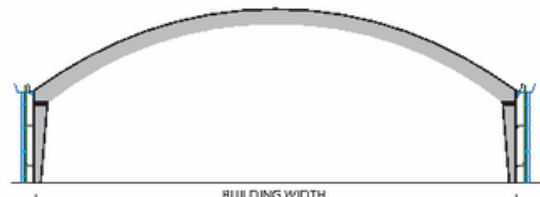


# STANDARD FRAMING SYSTEM

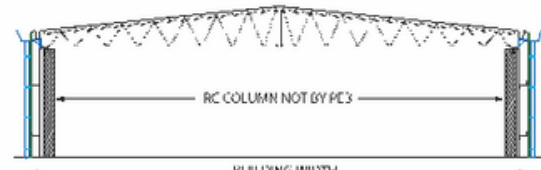
# STANDARD STRUCTURAL DETAILS



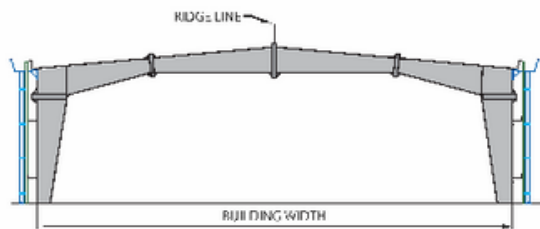
TYPICAL CROSS SECTION



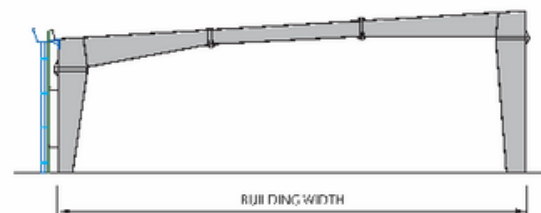
MAX. PRACTICAL WIDTH = 100 m  
Built-up Curved Rafter (BU)



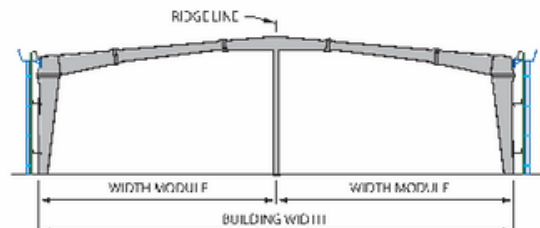
MAX. PRACTICAL WIDTH = 80 m  
PebTruss (PT)



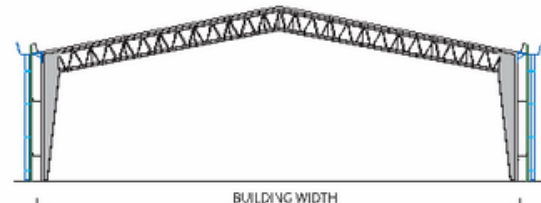
MAX. PRACTICAL WIDTH = 100 m  
Clear Span (CS)



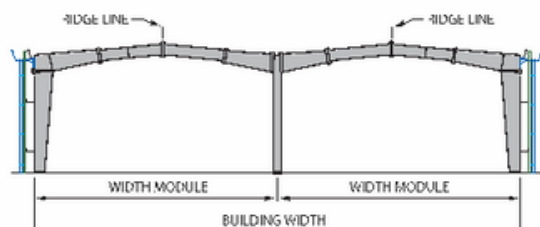
MAX. PRACTICAL WIDTH = 60 m  
Single Slope (SS)



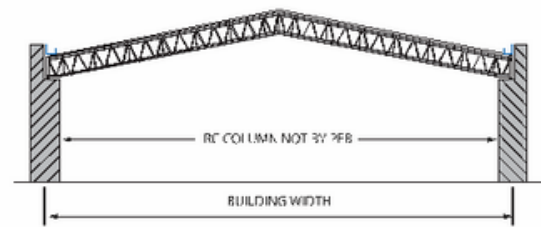
MAX. PRACTICAL WIDTH = 150 m  
Multi-Span "1" (MS-1)



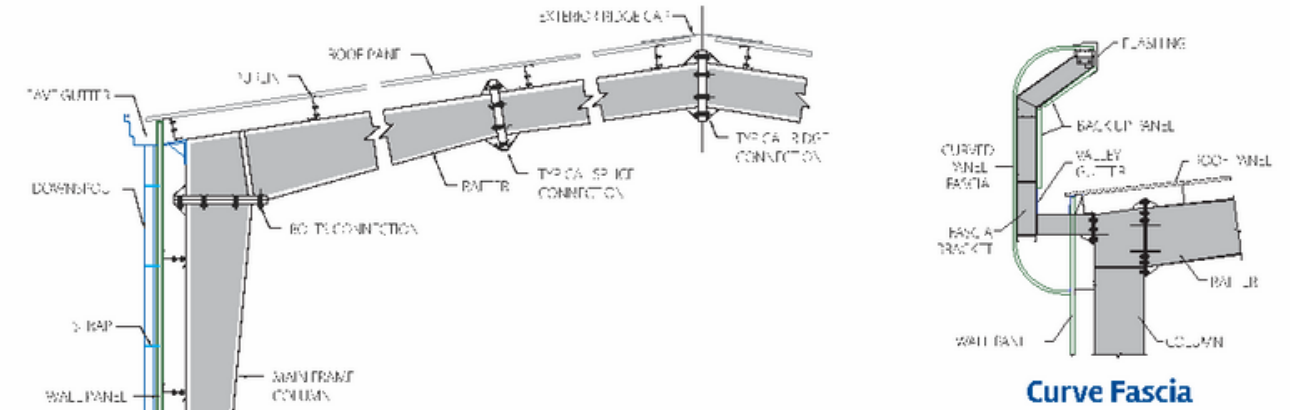
MAX. PRACTICAL WIDTH = 80 m  
PebHybrid (PH)



MAX. PRACTICAL WIDTH = 150 m  
Multi-Gable (MG)

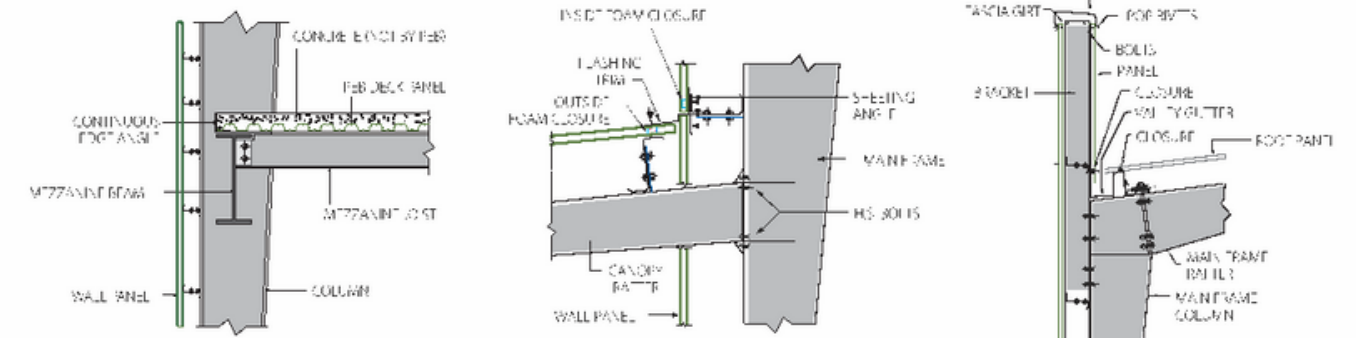


MAX. PRACTICAL WIDTH = 65 m  
Roof System (RS)



Rigid frame with By-Pass Girts

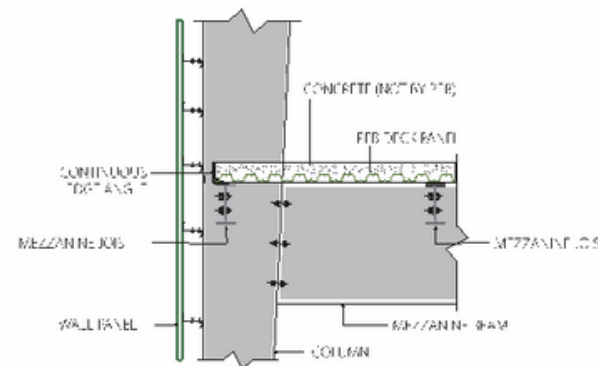
Curve Fascia



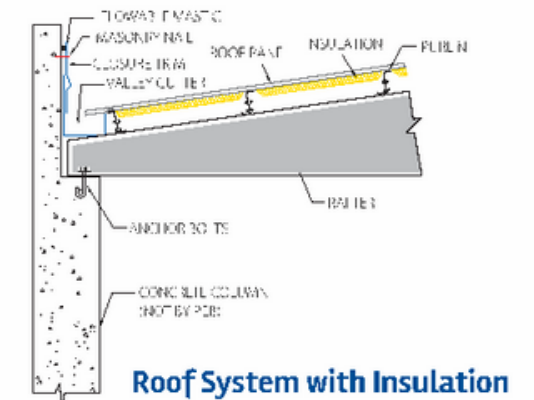
Mezzanine Beam Connection to Main Frame Column

Canopy

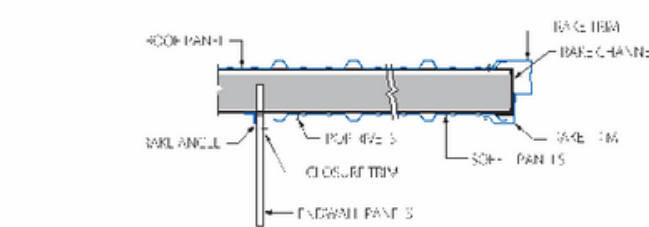
Parapet Fascia



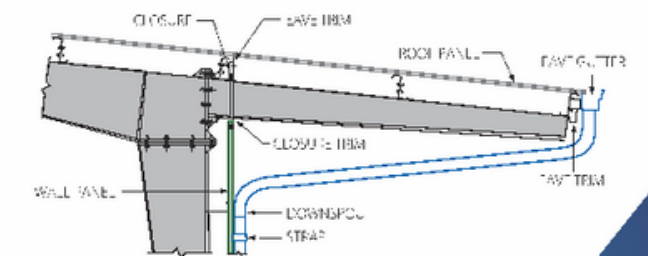
Mezzanine Joist Connection to Mezzanine Beam



Roof System with Insulation



Endwall Roof Extension with Soffit



Sidewall Roof Extension



# PEB BUILDING COMPONENTS

## QUALITY. PRE-ASSURED.

Adding value to our customer's products is part of a longstanding tradition of innovation at Supreme. At **Supreme Color Roofing Pvt. Ltd** We offers a truly global capacity with state-of-the-art manufacturing unit backed by the motivated team of engineers and trained professionals.

Our plant based at Bawal, Indore offers wide range of Metal Roofing, Wall Cladding, Steel Decking, Insulated Sandwich Panels, Prefabricated Cabins, Purlin sections, and Ventilation systems with production capacity of approx 50,000 ton/annum.

### PROFILE SHEETS

SCRD profile sheets are available in a wide range of models that support a broad variety of architectural styles.

Straight, simple shapes combine well with older styles and bestow a touch of individuality to modern buildings.

Owing to their quality attributes such as robust design, dimensional accuracy, corrosion resistance, durability, high strength and easy installation, these are highly treasured by the clients. Our roofing sheets are dimensioned to your specifications and are available either as ready-to-install or ready-installed.

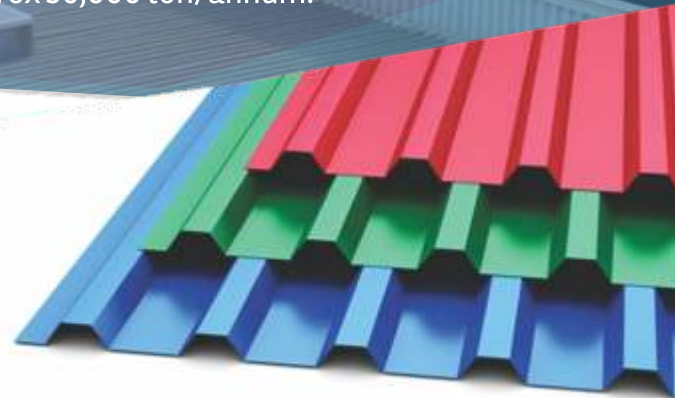
### GALVANIZED CORRUGATED SHEETS

Our galvanizing process applies precisely controlled uniform protective layer of Zinc on steel surface with very strong adherence, This steel surface is further protected with a layer of Chromatic acid to ensure no surface rusting during transportation and storage.

### STANDING SEAM PROFILE

Freeform, flowing transitions from the roof to the façade, or very long individual tracks for maximum safety on roofs with a slight incline is offering outstanding design potentiality; performance and durability making our Standing Seam Roofs look great aesthetically along with offering security and weatherproofing solutions.

Due to concealed fitting the risk of leakage is reduced.



### DECKING SHEETS

Our steel deck have special embossments , rolled into the profile created the highest bond between concrete and the steel floor, together with the smaller ribs and flutes enhances our product's composite action and rigidity.

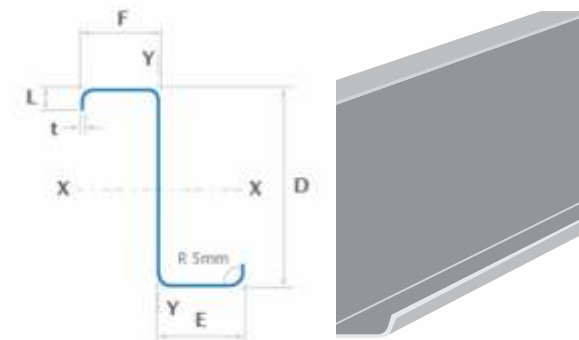
Our deck is produced from galvanised and colour coated galvanised steel produced to IS:513, IS:277, IS:14246, AS 1397- G300-Z275 in the thickness .08mm, 1mm, 1.2mm.



### C PURLINS

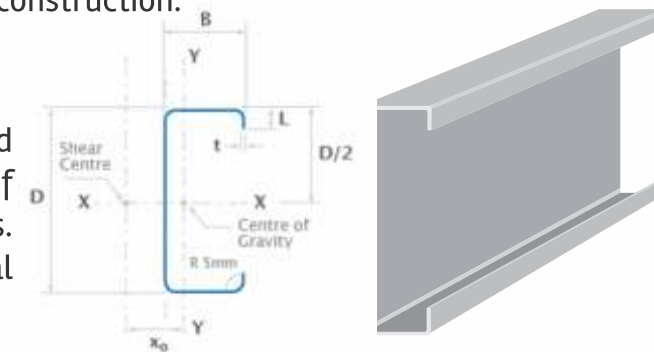
C Purlins are horizontal structures that are used to support the load from the roof deck or the sheathing.

The plane surface of this purlin on one side has made it a preferred material for cladding due to its easy installation on concrete structures or steel. Our range purlins are light in weight and perfect for simple span construction.



### Z PURLINS

Z Purlins are made using cold-formed or rolled sheets for supporting roof. The flexible shape of these beams facilitates various designs solutions. The range is known for saving upto 50% on structural sheet in comparison with hot rolled angles.

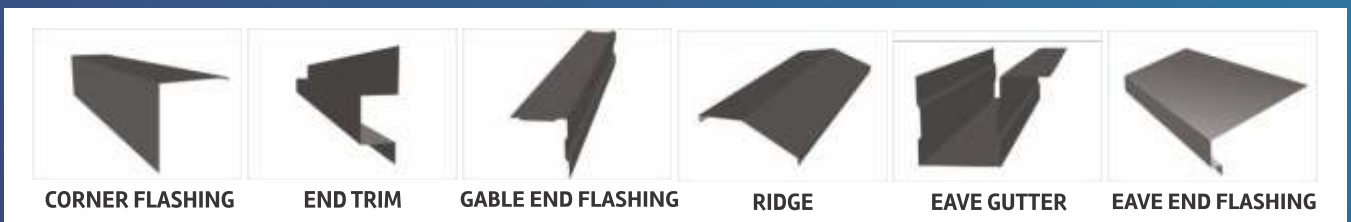


### SOLAR PURLINS

Rooftop solar energy systems can also be very heavy, and Supremes' time-tested metal roof panels prove to be sturdy and sustainable mounts for solar panel systems.

### ACCESSORIES

We hold expertise in manufacturing and supplying an exquisite range of Roofing Accessories. We are known for bringing forth an amazing variety of Roofing Accessories that is suitable for diverse applications. Top grade raw material is used in the production of Roofing Accessories, available with us.





## OUR PARTNERS

Our client list speaks for itself. Since our earliest days, we've represented everything from start-ups to Legacy brands with that same partnership approach and dedication at the core of every engagement. Every day, since our inception, we've been devoting our hearts and minds to our clients, achieving great successes and building lasting relationships.

**Anchor**

**adani  
wilmar**

**f** Oriente  
Foundr  
Pvt. Ltd



**CHROMENI**  
STEELS PVT. LTD.

**AGARWALLA  
TIMBERS** (PVT LTD)

**Vimal**  
Healthful

**Rusan**  
TECHNOLOGY DRIVEN ENTERP

**BUNGE**

